

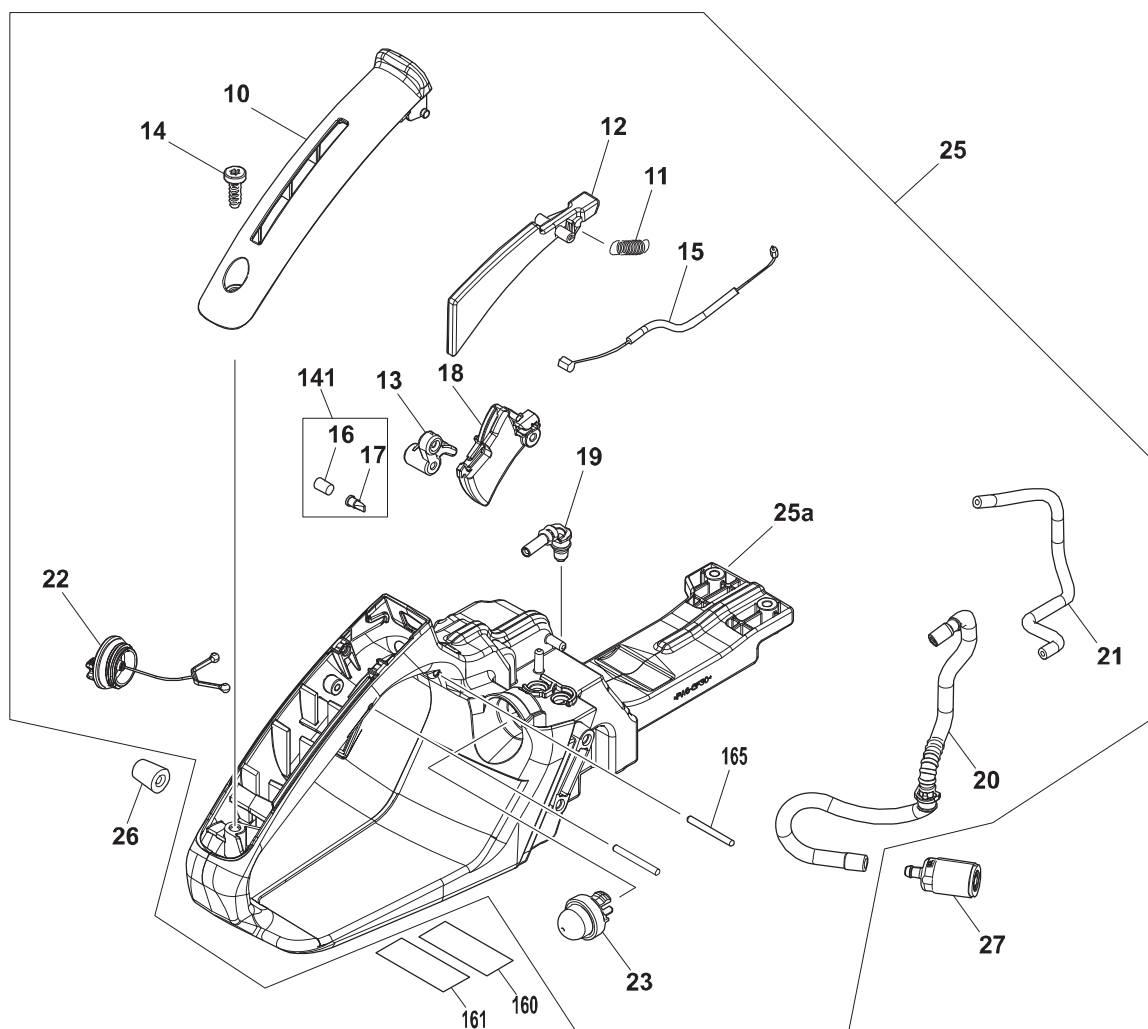
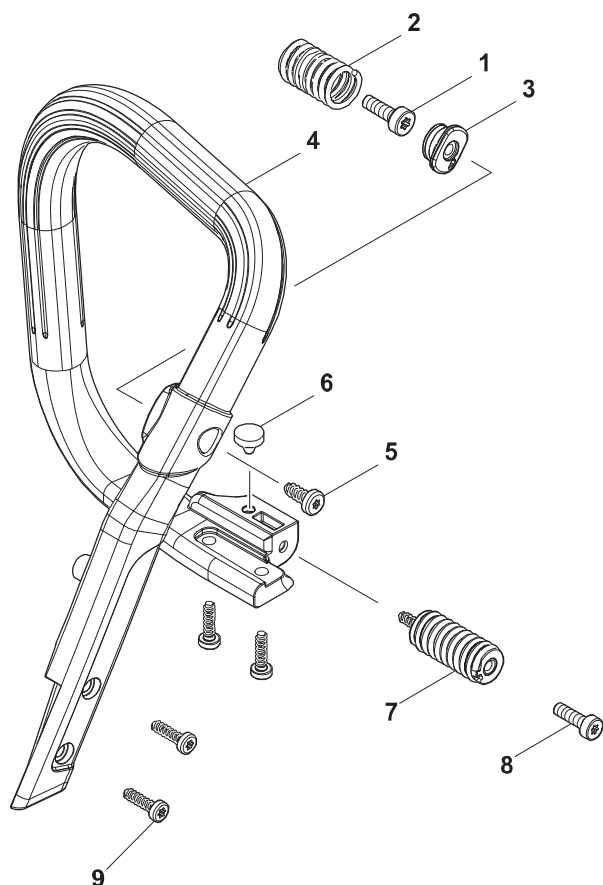


# Ersatzteilliste Spare Parts List

2017-012

**PS550**  
**EA5600F**

PS550, EA5600F (D, GB)

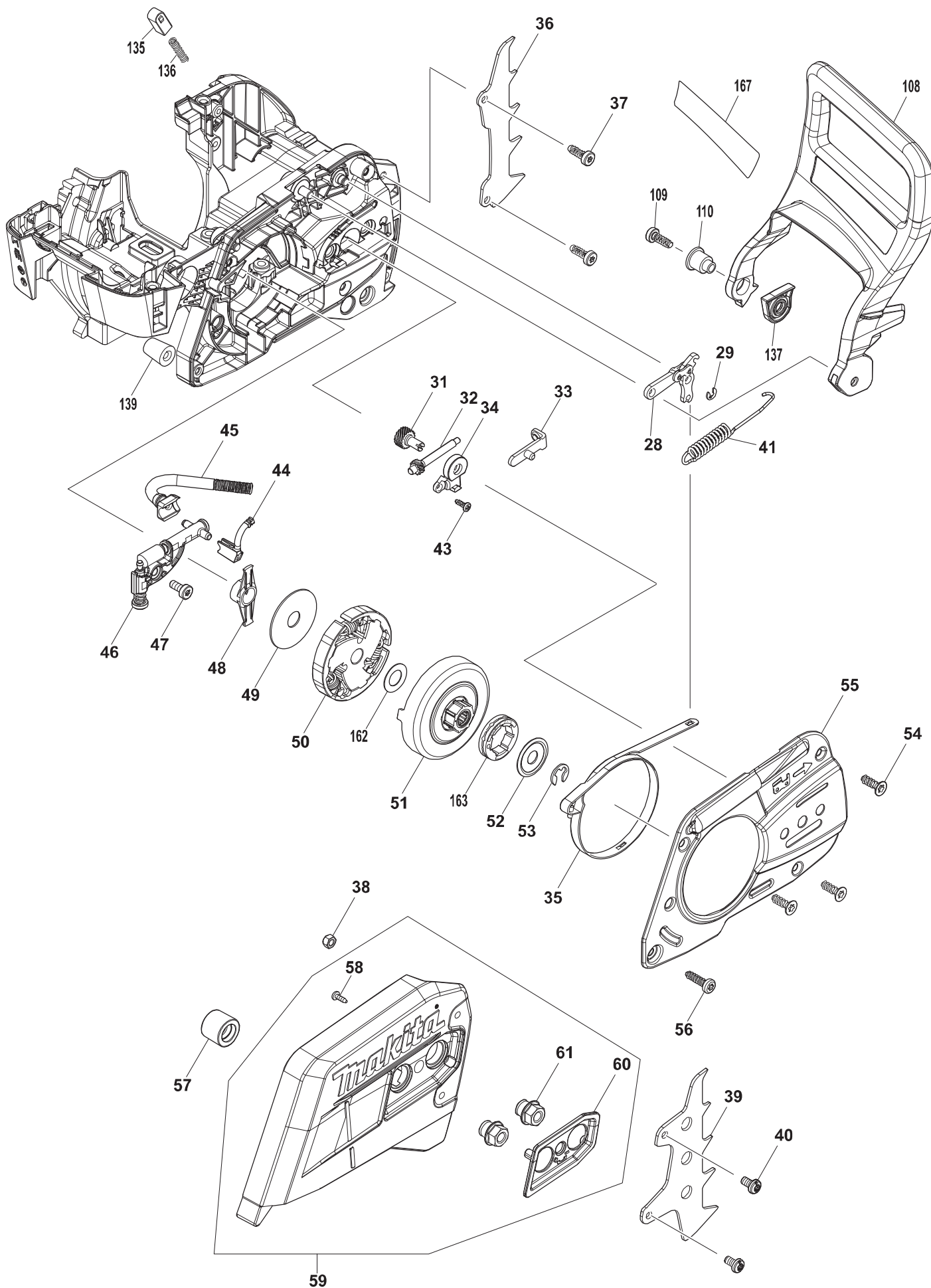


PS550, EA5600F

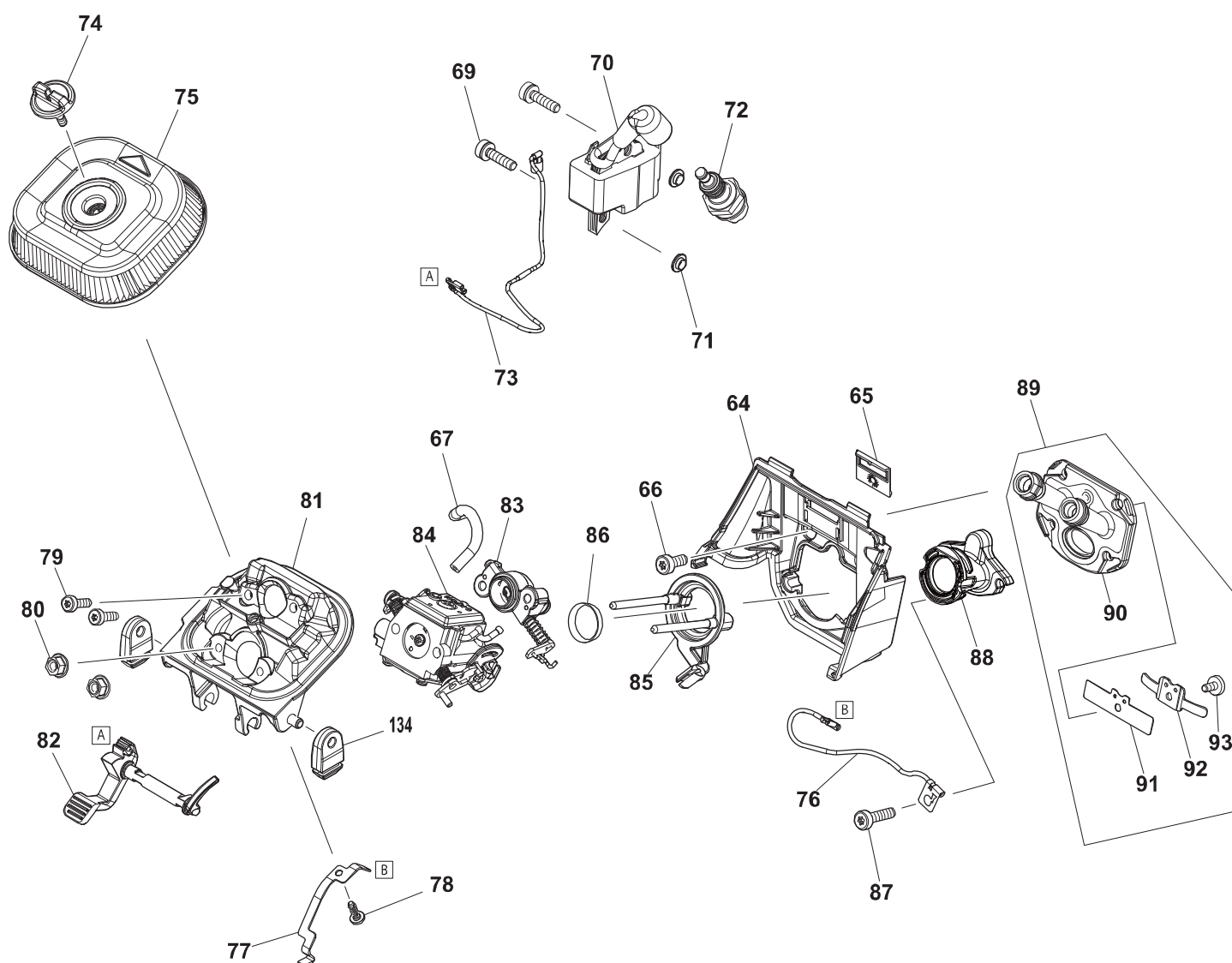
1

Kraftstofftank, Bügelgriff  
Fuel tank, tubular grip

| Seite / Page | Pos. | PS550 | EA5600F | Teil-Nr.<br>Part No. | Hinweise<br>Notes | Bezeichnung              | Spezifikation<br>Specification | Description             |
|--------------|------|-------|---------|----------------------|-------------------|--------------------------|--------------------------------|-------------------------|
| 1            | 1    | 1     | 1       | 266605-8             |                   | SCHRAUBE INNEN6RD ZK     | M5x16                          | H.L. SOCKET HEAD BOLT   |
| 1            | 2    | 1     | 1       | 231898-6             |                   | DÄMPFUNGSFEDER           |                                | DAMPING SPRING          |
| 1            | 3    | 1     | 1       | 456373-3             |                   | EINSCHRAUBSTÜCK          |                                | SPRING HOLDER           |
| 1            | 4    | 1     | 1       | 456379-1             |                   | BÜGELGRIFF               |                                | TUBULAR HANDLE          |
| 1            | 5    | 1     | 1       | 913467164            |                   | SCHRAUBE INNEN6RD ZK     | 6,7X16                         | H.L. SOCKET HEAD BOLT   |
| 1            | 6    | 1     | 1       | 965402360            |                   | GUMMIPUFFER              |                                | RUBBER BUFFER           |
| 1            | 7    | 1     | 1       | 143754-7             |                   | DÄMPFUNGSFEDER KPL.      |                                | DAMPING SPRING ASSEMBLY |
| 1            | 8    | 1     | 1       | 908006205            |                   | INNENSTERN-SCHRAUBE      | M6x20                          | SCREW                   |
| 1            | 9    | 4     | 4       | 913455204            |                   | SCHRAUBE INNEN6RD ZK K   | 5,5x20                         | SCREW                   |
| 1            | 10   | 1     | 1       | 131117050            |                   | GRIFFOBERSCHALE          |                                | GRIP OUTER SHELL        |
| 1            | 11   | 1     | 1       | 130117060            |                   | ZUGFEDER                 |                                | TENSION SPRING          |
| 1            | 12   | 1     | 1       | 038117020            |                   | SICHERHEITSSPERRTASTE    |                                | CATCH LEVER             |
| 1            | 13   | 1     | 1       | 038117030            |                   | UMLENKHEBEL              |                                | ROCKER                  |
| 1            | 14   | 1     | 1       | 913455164            |                   | INNENSTERN-SCHRAUBE      | 5,5X16                         | SCREW                   |
| 1            | 15   | 1     | 1       | 131117040            |                   | BOWDENZUG                |                                | BOWDEN CABLE            |
| 1            | 16   | 1     | 1       | 010175030            |                   | SINTEREINSATZ            |                                | SINTER INSERT           |
| 1            | 17   | 1     | 1       | 424170-5             |                   | LIPPENRUECKSCHLAGVENTIL  |                                | VALVE                   |
| 1            | 18   | 1     | 1       | 130117010            |                   | GASHEBEL                 |                                | THROTTLE LEVER          |
| 1            | 19   | 1     | 1       | 131114340            |                   | KRAFTSTOFFLEITUNG        |                                | FUEL PIPE               |
| 1            | 20   | 1     | 1       | 131114310            |                   | KRAFTSTOFFLEITUNG        |                                | FUEL PIPE               |
| 1            | 21   | 1     | 1       | 131114090            |                   | PRIMERSCHLAUCH           | 2,5x169                        | TUBE                    |
| 1            | 22   | 1     | 1       | 181114202            |                   | TANKDECKEL KPL.          |                                | TANK CAP ASSEMBLY       |
| 1            | 22   | 1     | 1       | 213080-9             |                   | O-RING                   | 29,3X3,6                       | O RING                  |
| 1            | 23   | 1     | 1       | 130153500            |                   | KRAFTSTOFFPUMPE          | PRIMER                         | PRIMER                  |
| 1            | 25   | 1     |         | 131114180            |                   | KRAFTSTOFFTANK KPL. ROT  | INC.<br>10-23,25a,141,165      | FUEL TANK SET RED       |
| 1            | 25   |       | 1       | 131114680            |                   | KRAFTSTOFFTANK KPL. BLAU | INC.<br>10-23,25a,141,165      | FUEL TANK SET BLUE      |
| 1            | 25a  | 1     |         | 131114110            |                   | KRAFTSTOFFTANK ROT       |                                | FUEL TANK RED           |
| 1            | 25a  |       | 1       | 131114610            |                   | KRAFTSTOFFTANK BLAU      |                                | FUEL TANK BLUE          |
| 1            | 26   | 1     | 1       | 181111230            |                   | ANSCHLAGDÄMPFER          |                                | IMPACT PROTECTION       |
| 1            | 27   | 1     | 1       | 010114200            |                   | SAUGKOPF                 |                                | FILTER                  |
| 1            | 141  | 1     | 1       | 170175010            |                   | SATZ BELÜFTUNGSVENTIL    | INC. 16,17                     | AIR VALVE CPL.          |
| 1            | 165  | 2     | 2       | 935930280            |                   | ZYLINDERSTIFT            | 3x28                           | CYLINDRICAL PIN         |



| Seite / Page | Pos. | PS550 | EA5600F | Teil-Nr.<br>Part No. | Hinweise<br>Notes | Bezeichnung                  | Spezifikation<br>Specification | Description                  |
|--------------|------|-------|---------|----------------------|-------------------|------------------------------|--------------------------------|------------------------------|
| 2            | 28   | 1     | 1       | 185213100            |                   | BREMSMECHANIK KPL.           |                                | BRAKING MECHANISM            |
| 2            | 29   | 1     | 1       | 927304000            |                   | SICHERUNGSSCHEIBE            |                                | SAFETY WASHER                |
| 2            | 31   | 1     | 1       | 181213250            |                   | EINSTELLSCHEIBE              | PROFI                          | ADJUSTING SCREW              |
| 2            | 32   | 1     | 1       | 181213230            |                   | KETTENSCHNAPPSCHRAUBE        | PROFI                          | TENSIONING SCREW             |
| 2            | 33   | 1     | 1       | 130213240            |                   | SPANNSCHLITTEN               | PROFI                          | TENSION SLIDE                |
| 2            | 34   | 1     | 1       | 452667-4             |                   | GETRIEBEABDECKUNG            | PROFI                          | TRANSMISSION COVER           |
| 2            | 35   | 1     | 1       | 181213011            |                   | BREMSBAND                    |                                | BRAKE SPRING                 |
| 2            | 36   | 1     | 1       | 130250011            |                   | ZACKENLEISTE                 |                                | SPIKE BAR                    |
| 2            | 37   | 2     | 2       | 913455164            |                   | INNENSTERN SCHRAUBE          | 5,5X16                         | SCREW                        |
| 2            | 38   | 2     | 2       | 920405000            | US                | 6KT-MUTTER                   | M5                             | HEXAGONAL NUT                |
| 2            | 39   | 1     | 1       |                      | US                | ZACKENLEISTE                 | USA, CDN                       | SCREW                        |
| 2            | 40   | 2     | 2       | 266850-5             | US                | SCHRAUBE INNEN6RD            | M5X10                          | H.L.BIND BOLT                |
| 2            | 41   | 1     | 1       | 181213023            |                   | ZUGFEDER                     |                                | TENSION SPRING               |
| 2            | 43   | 1     | 1       | 165888120            |                   | SCHRAUBE                     | 3X10 KS K                      | TAPPING SCREW                |
| 2            | 44   | 1     | 1       | 181245120            |                   | ÖLDRUCKLEITUNG               |                                | PRESSURE LINE                |
| 2            | 45   | 1     | 1       | 144274-4             |                   | ÖLSAUGLEITUNG KPL.           |                                | SUCTION LINE OIL CPL.        |
| 2            | 46   | 1     | 1       | 161346-0             |                   | ÖLPUMPE KPL.                 |                                | OIL PUMP CPL.                |
| 2            | 47   | 1     | 1       | 908705125            |                   | SCHRAUBE                     | M5x12                          | SCREW                        |
| 2            | 48   | 1     | 1       | 181245090            |                   | ÖLPUMPENANTRIEB              |                                | PUMP DRIVE                   |
| 2            | 49   | 1     | 1       | 267389-1             |                   | FÜHRUNGSSCHEIBE              | 44,5x12x1                      | DISC                         |
| 2            | 50   | 3     | 3       | 232352-3             |                   | ZUGFEDER                     |                                | TENSION SPRING               |
| 2            | 50   | 1     | 1       | 123857-3             |                   | KUPPLUNG KPL.                |                                | CLUTCH ASSY.                 |
| 2            | 51   | 1     | 1       | 181223200            |                   | KUPPLUNGSTROMMEL KPL.        | SMALL                          | CLUTCH DRUM CPL.             |
| 2            | 52   | 1     | 1       | 181224081            |                   | TOPFSCHLEIBE                 |                                | DISC                         |
| 2            | 53   | 1     | 1       | 927408000            |                   | SICHERUNGSSCHEIBE            | D=8X1,3                        | WASHER                       |
| 2            | 54   | 3     | 3       | 913850155            |                   | INNENSTERN-SENKKOPF SCHRAUBE | 5x15                           | SCREW                        |
| 2            | 55   | 1     | 1       | 326647-5             |                   | ABDECKPLATTE F. KETTENBREMSE |                                | CHAIN BREAK COVER            |
| 2            | 56   | 1     | 1       | 913455204            |                   | SCHRAUBE INNEN6RD ZK K       | 5,5x20                         | SCREW                        |
| 2            | 57   | 1     | 1       | 456378-3             |                   | KETTENFANGROLLE              |                                | CHAIN CATCH                  |
| 2            | 58   | 2     | 2       | 165888120            |                   | SCHRAUBE                     | 3X10 KS K                      | TAPPING SCREW                |
| 2            | 59   | 1     |         | 131213120            |                   | KETTENRADSCHUTZ KPL. ROT     | INC. 58,60,61                  | SPROCKET GUARD ASSEMBLY      |
| 2            | 59   | 1     |         | 131213620            |                   | KETTENRADSCHUTZ KPL. BLAU    | INC. 58,60,61                  | SPROCKET GUARD ASSEMBLY BLUE |
| 2            | 60   | 1     | 1       | 131213360            |                   | ABDECKUNG                    |                                | NUT COVER                    |
| 2            | 61   | 2     | 2       | 923308002            |                   | BUNDMUTTER KPL.              | M8X1,25                        | FLANGE NUT COMPLETE          |
| 2            | 108  | 1     | 1       | 131213050            |                   | HANDSCHUTZ                   |                                | HAND GUARD                   |
| 2            | 109  | 1     | 1       | 913455164            |                   | INNENSTERN SCHRAUBE          | 5,5X16                         | SCREW                        |
| 2            | 110  | 1     | 1       | 326676-8             |                   | BUCHSE F. HANDSCHUTZ         |                                | BUSH                         |
| 2            | 135  | 1     | 1       | 313212-9             |                   | KULISSE FÜR HANDSCHUTZ       |                                | HAND GUARD GUIDE             |
| 2            | 136  | 1     | 1       | 181213060            |                   | DRUCKFEDER FÜR KULISSE       |                                | COMPRESSION SPRING           |
| 2            | 137  | 1     | 1       | 456613-9             |                   | DISTANZSTÜCK                 |                                | SPACER                       |
| 2            | 139  | 1     | 1       | 181111230            |                   | ANSCHLAGDÄMPFER              |                                | IMPACT PROTECTION            |
| 2            | 162  | 1     | 1       | 181224090            |                   | ANLAUFSCHLEIBE               | 10x18x0,5                      | SHIM                         |
| 2            | 163  | 1     | 1       | 181224040            |                   | ZAHNKRANZ                    | 325", Z=7, SM                  | RIM SPROCKET                 |
| 2            | 167  | 1     | 1       | 810449-4             |                   | SCHILD HANDSCHUTZ            |                                | LABEL                        |

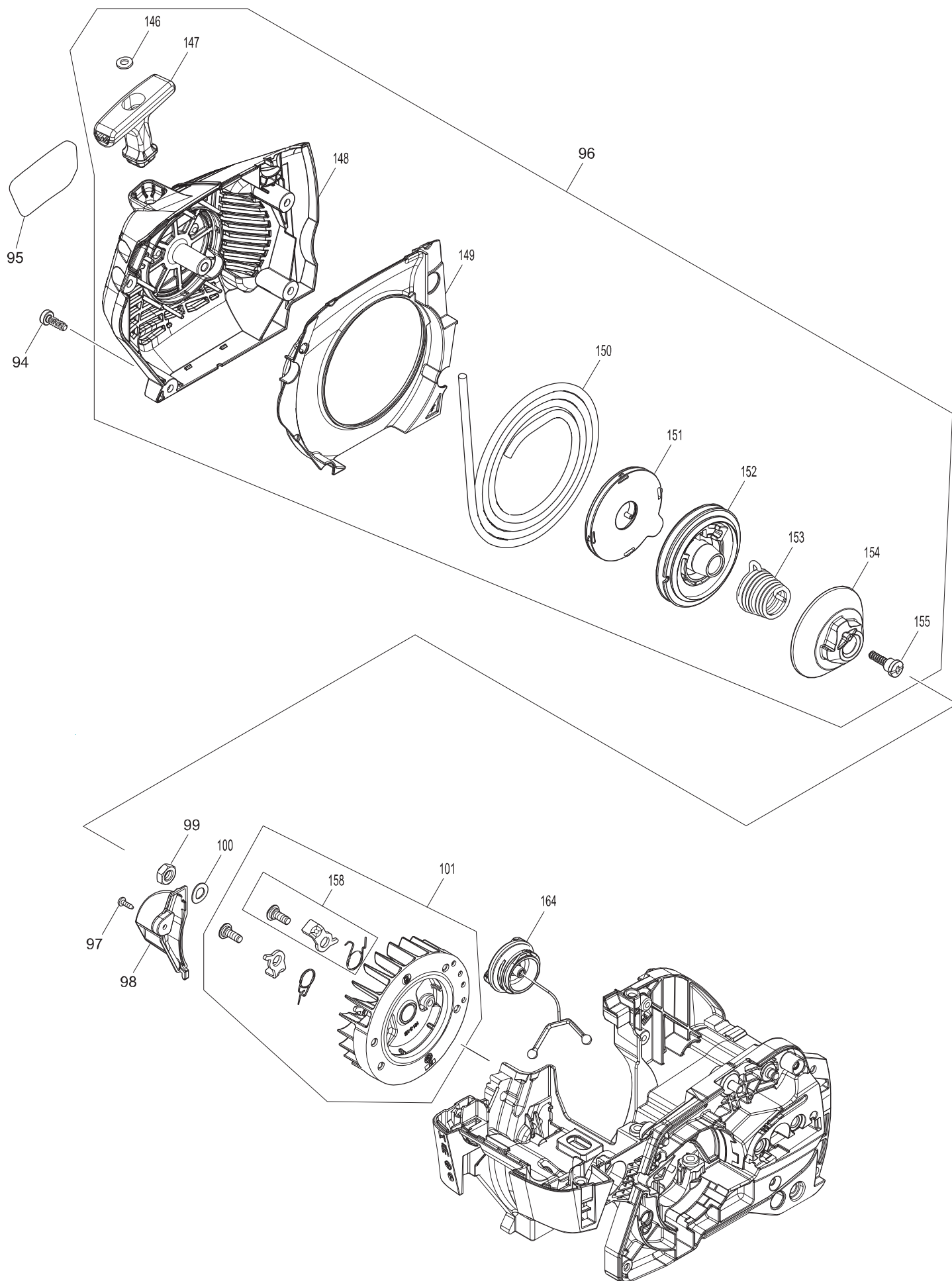


PS550, EA5600F

3

Zünder, Luftfilter  
Ignition coil, air filter

| Seite / Page | Pos. | PS550 | EA5600F | Teil-Nr.<br>Part No. | Hinweise<br>Notes | Bezeichnung               | Spezifikation<br>Specification | Description               |
|--------------|------|-------|---------|----------------------|-------------------|---------------------------|--------------------------------|---------------------------|
| 3            | 64   | 1     | 1       | 131131080            |                   | ZWISCHENWAND              |                                | INTERMEDIATE FLANGE       |
| 3            | 65   | 1     | 1       | 195118141            |                   | EINSATZ                   | SO/WI                          | INSERT                    |
| 3            | 66   | 2     | 2       | 908005125            |                   | SCHRAUBE INNEN6RD ZK      | M5x12                          | SCREW                     |
| 3            | 67   | 1     | 1       | 131114080            |                   | IMPULSLEITUNG             | 2,5x64                         | TUBE                      |
| 3            | 69   | 2     | 2       | 908805205            |                   | SCHRAUBE                  | M5X20                          | TORX SOCKET HEAD BOLT     |
| 3            | 70   | 1     | 1       | 125143011            |                   | ZÜNDKERZENSTECKER         |                                | SPARK PLUG CAP            |
| 3            | 70   | 1     | 1       | 326210-4             |                   | FEDER                     |                                | SPRING                    |
| 3            | 70   | 1     | 1       | 131140100            |                   | ZÜNDSPULE KPL.            |                                | IGNITION COIL COMPLETE    |
| 3            | 70   | 1     | 1       | 131143040            |                   | ISOLIERSCHLAUCH           | 6x90                           | INSULATING TUBE           |
| 3            | 71   | 2     | 2       | 195143031            |                   | ISOLIERSCHEIBE            | nature                         | ISOLATING WASHER          |
| 3            | 72   | 1     | 1       | 965603021            |                   | ZÜNDKERZE                 |                                | SPARK PLUG                |
| 3            | 73   | 1     | 1       | 632F91-5             |                   | KURZSCHLUSSKABEL          |                                | LEAD UNIT                 |
| 3            | 74   | 1     | 1       | 265791-2             |                   | FLÜGELSCHRAUBE            | M4                             | THUMB SCREW               |
| 3            | 75   | 1     | 1       | 131173010            |                   | LUFTFILTER                |                                | AIR FILTER                |
| 3            | 76   | 1     | 1       | 632F92-3             |                   | MASSEKABEL                |                                | LEAD UNIT                 |
| 3            | 77   | 1     | 1       | 131155010            |                   | KONTAKTFEDER              |                                | CONTACT SPRING            |
| 3            | 78   | 1     | 1       | 165888120            |                   | SCHRAUBE                  | 3X10 KS K                      | TAPPING SCREW             |
| 3            | 79   | 2     | 2       | 908005205            |                   | INNENSTERN SCHRAUBE       | M5x20                          | SCREW                     |
| 3            | 80   | 2     | 2       | 175131300            |                   | 6KT-MUTTER MIT BUND       |                                | HEXAGONAL NUT WITH COLLAR |
| 3            | 81   | 1     | 1       | 456376-7             |                   | ANSAUGKRÜMMER             |                                | INTAKE MANIFOLD           |
| 3            | 82   | 1     | 1       | 456375-9             |                   | CHOKEHEBEL                |                                | CHOKE LEVER               |
| 3            | 83   | 1     | 1       | 131151700            |                   | LUFTKLAPPE KPL.           |                                | AIR FLAP ASSEMBLY         |
| 3            | 84   | 1     | 1       | 131151100            |                   | VERGASER                  | EU, USA                        | CARBURETOR                |
| 3            | 85   | 1     | 1       | 131131070            |                   | FLANSCHRING               |                                | FLANGE RING               |
| 3            | 86   | 1     | 1       | 131131090            |                   | EINSATZ F. ANSAUGSCHLAUCH |                                | SLEEVE                    |
| 3            | 87   | 2     | 2       | 908005205            |                   | INNENSTERN SCHRAUBE       | M5x20                          | SCREW                     |
| 3            | 88   | 1     | 1       | 131131050            |                   | ANSAUGSCHLAUCH            |                                | SUCTION HOSE              |
| 3            | 89   | 1     | 1       | 131131160            |                   | LUFTSCHLAUCH KPL.         | INC. 90-93                     | AIR HOSE COMPLETE         |
| 3            | 90   | 1     | 1       | 131131030            |                   | LUFTSCHLAUCH              |                                | AIR HOSE                  |
| 3            | 91   | 1     | 1       | 131179020            |                   | EINLAßMEMBRAN             |                                | REED VALVE                |
| 3            | 92   | 1     | 1       | 131179010            |                   | VENTILBLECH               |                                | VALVE STOPPER             |
| 3            | 93   | 1     | 1       | 266985-2             |                   | SCHRAUBE INNEN6RD         | M4X8 S LK                      | SCREW                     |
| 3            | 134  | 2     | 2       | 424806-6             |                   | DÄMPFER F. ANSAUGKRÜMMER  |                                | INTAKE MANIFOLD DAMPER    |



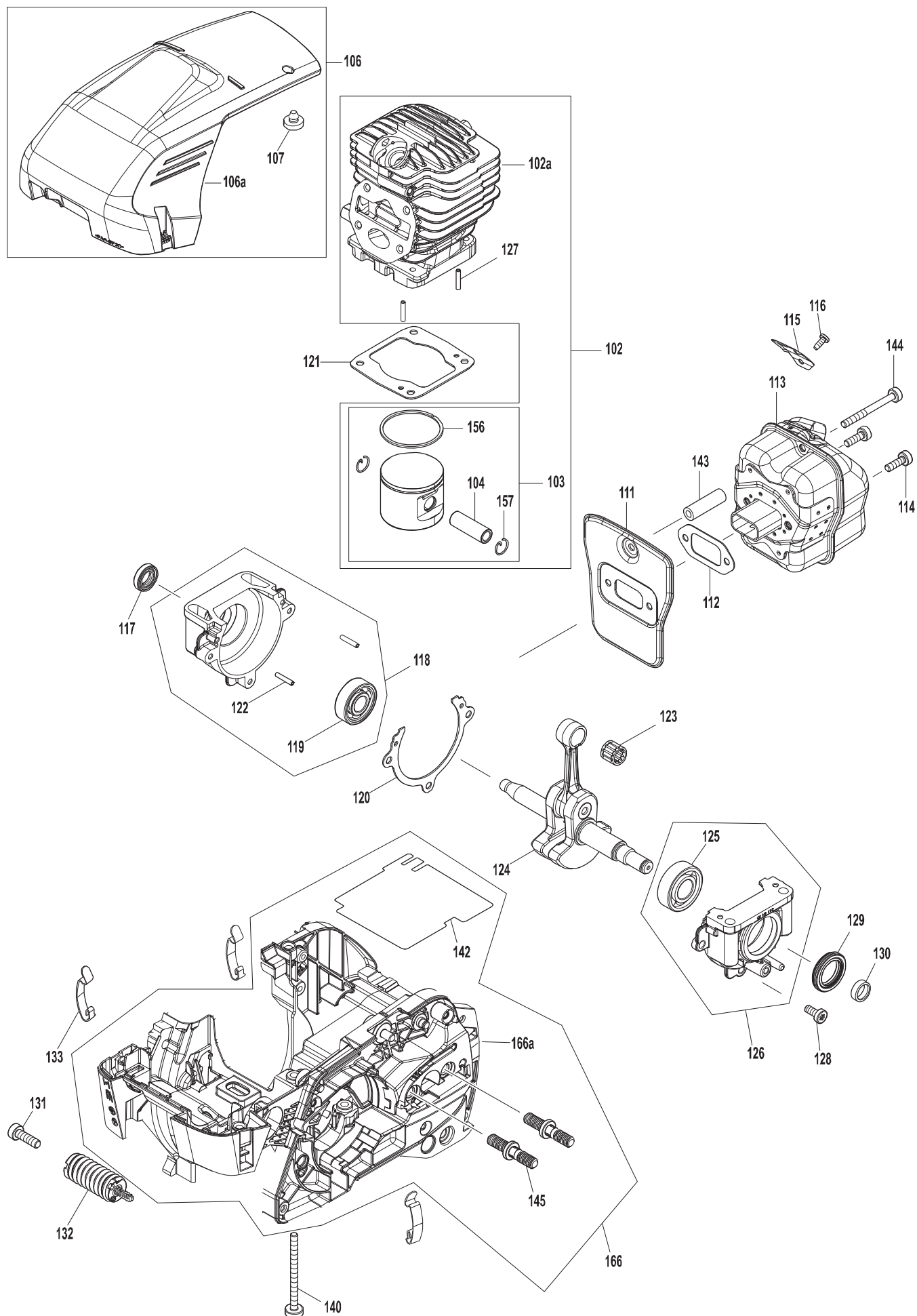


PS550, EA5600F

4

Polrad, Anwerfvorrichtung  
Flywheel, starter

| Seite / Page | Pos. | PS550 | EA5600F | Teil-Nr.<br>Part No. | Hinweise<br>Notes | Bezeichnung                 | Spezifikation<br>Specification | Description                  |
|--------------|------|-------|---------|----------------------|-------------------|-----------------------------|--------------------------------|------------------------------|
| 4            | 94   | 4     | 4       | 913455164            |                   | INNENSTERN SCHRAUBE         | 5,5X16                         | SCREW                        |
| 4            | 95   | 1     |         | 131115020            |                   | SCHILD                      | PS-550                         | MODEL NO. LABEL              |
| 4            | 95   |       | 1       | 131115620            |                   | SCHILD                      | EA5600F                        | MODEL NO. LABEL              |
| 4            | 96   | 1     |         | 131160100            |                   | ANWERFVORRICHTUNG KPL. ROT  | INC. 146-155                   | RECOIL STARTER ASSEMBLY RED  |
| 4            | 96   |       | 1       | 131160600            |                   | ANWERFVORRICHTUNG KPL. BLAU | INC. 146-155                   | RECOIL STARTER ASSEMBLY BLUE |
| 4            | 97   | 1     | 1       | 165888120            |                   | SCHRAUBE                    | 3X10 KS K                      | TAPPING SCREW                |
| 4            | 98   | 1     | 1       | 456377-5             |                   | LUFTEINLASS                 |                                | AIR DUCT                     |
| 4            | 99   | 1     | 1       | 264022-6             |                   | 6KT-MUTTER                  | M8x1                           | HEXAGONAL NUT                |
| 4            | 100  | 1     | 1       | 926208001            |                   | FEDERSCHEIBE                | B8                             | SPRING WASHER                |
| 4            | 101  | 1     | 1       | 143331-5             |                   | POLRAD KPL.                 | INC. 158                       | FLYWHEEL ASSY.               |
| 4            | 146  | 1     | 1       | 928405000            |                   | SPANNSCHEIBE                |                                | DISC                         |
| 4            | 147  | 1     | 1       | 452458-3             |                   | ANWERFGRIF                  |                                | STARTER KNOB                 |
| 4            | 148  | 1     |         | 131160160            |                   | STARTERGEHÄUSE KPL. ROT     |                                | STARTING HOUSING COMPLETE    |
| 4            | 148  |       | 1       | 131160660            |                   | STARTERGEHÄUSE KPL. BLAU    |                                | STARTING HOUSING COMPLETE    |
| 4            | 149  | 1     | 1       | 131118040            |                   | LUFTFÜHRUNG                 |                                | AIR GUIDE PLATE              |
| 4            | 150  | 1     | 1       | 131164020            |                   | ANWERFSEIL                  | 3,5x1030                       | STARTER ROPE                 |
| 4            | 151  | 1     | 1       | 140587-1             |                   | RÜCKHOLFEDER IM GEHÄUSE     |                                | REWIND SPRING IN HOUSING     |
| 4            | 152  | 1     | 1       | 452224-8             |                   | SEILTROMMEL                 |                                | CABLE DRUM                   |
| 4            | 153  | 1     | 1       | 234193-3             |                   | FEDER FÜR LEICHTSTART       |                                | SPRING EASY-START            |
| 4            | 154  | 1     | 1       | 452227-2             |                   | MITNEHMER                   |                                | DRIVER FOR EASY-START        |
| 4            | 155  | 1     | 1       | 266616-3             |                   | SCHRAUBE                    |                                | SCREW                        |
| 4            | 158  | 2     | 2       | 181166100            |                   | ANWERFKLINKEN-SET           | Set = 2 Stck./pcs.             | STARTER RATCHET CPL.         |
| 4            | 164  | 1     | 1       | 181114202            |                   | TANKDECKEL KPL.             |                                | TANK CAP ASSEMBLY            |
| 4            | 164  | 1     | 1       | 213080-9             |                   | O-RING                      | 29,3X3,6                       | O RING                       |



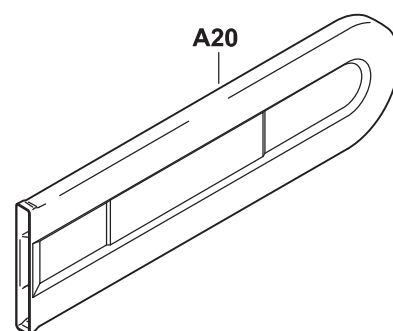
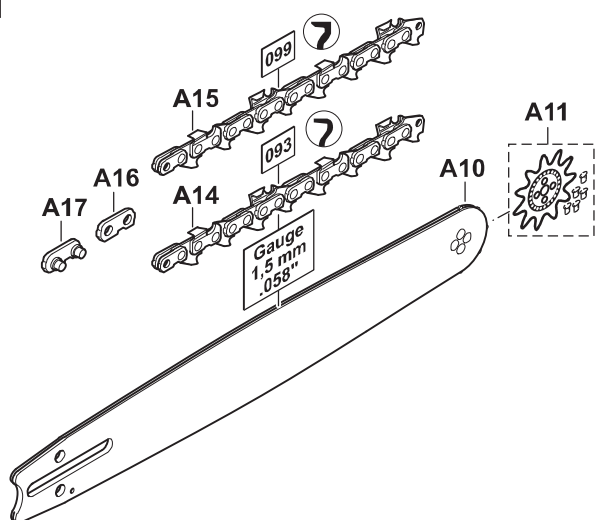
PS550, EA5600F

5

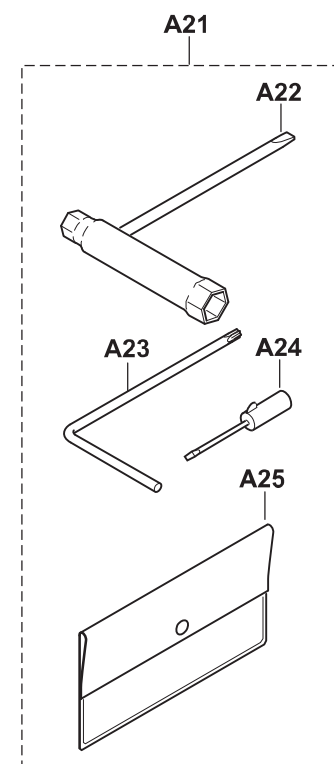
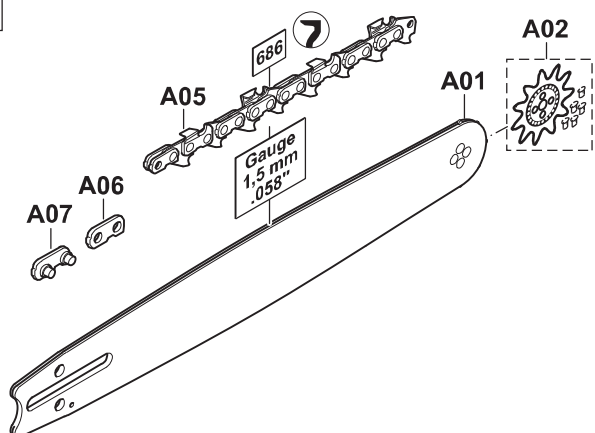
Zylinder, Kurbelwelle, Schalldämpfer  
Cylinder, crankshaft, muffler

| Seite / Page | Pos.     | PS550 | EA5600F | Teil-Nr.<br>Part No. | Hinweise<br>Notes | Bezeichnung            | Spezifikation<br>Specification | Description                  |
|--------------|----------|-------|---------|----------------------|-------------------|------------------------|--------------------------------|------------------------------|
| 5            | 102      | 1     | 1       | 131131200            |                   | ZYLINDER & KOLBEN KPL. | INC. 103,127                   | CYLINDER PISTON SET          |
| 5            | 102<br>a | 1     | 1       | 131131011            |                   | ZYLINDER               | D45                            | CYLINDER                     |
| 5            | 103      | 1     | 1       | 131132100            |                   | KOLBEN KPL.            | D45 INC.<br>104,156,157        | PISTON SET                   |
| 5            | 104      | 1     | 1       | 131132030            |                   | KOLBENBOLZEN           |                                | PISTON PIN                   |
| 5            | 106      | 1     | 1       | 131118600            |                   | ABDECKHAUBE KPL.       | INC. 107                       | HOOD SET                     |
| 5            | 106<br>a | 1     | 1       | 456374-1             |                   | ABDECKHAUBE            |                                | HOOD                         |
| 5            | 107      | 1     | 1       | 965402360            |                   | GUMMIPUFFER            |                                | RUBBER BUFFER                |
| 5            | 111      | 1     | 1       | 131174090            |                   | ABSCHIRMBLECH          |                                | COOLING PLATE                |
| 5            | 112      | 1     | 1       | 395174120            |                   | DICHTUNG               |                                | GASKET                       |
| 5            | 113      | 1     | 1       | 131174100            |                   | SCHALLDÄMPFER KPL.     |                                | MUFFLER COMPLETE             |
| 5            | 114      | 2     | 2       | 266605-8             |                   | SCHRAUBE INNEN6RD ZK   | M5x16                          | H.L. SOCKET HEAD BOLT        |
| 5            | 115      | 1     | 1       | 131174040            |                   | FUNKENSCHUTZSIEB       |                                | SPARK ARRESTER               |
| 5            | 116      | 1     | 1       | 914535105            |                   | BLECHSCHRAUBE          | 3,5X9,5                        | SCREW                        |
| 5            | 117      | 1     | 1       | 962900156            |                   | RADIALDICHTUNG         | Ø 12/20x5                      | RADIAL RING                  |
| 5            | 118      | 1     | 1       | 131111100            |                   | KURBELGEHÄUSE MS KPL.  | INC. 119,122                   | CRANKCASE MS COMPLETE        |
| 5            | 119      | 1     | 1       | 960102121            |                   | KUGELLAGER             | 6201                           | BALL BEARING                 |
| 5            | 120      | 1     | 1       | 131111060            |                   | KURBELGEHÄUSEDICHTUNG  |                                | CRANKCASE GASKET             |
| 5            | 121      | 1     | 1       | 131131020            |                   | ZYLINDERFUSSDICHTUNG   |                                | CYLINDER-BASE GASKET         |
| 5            | 122      | 2     | 2       | 936430160            |                   | SPIRALSPANNSTIFT       | 3x16                           | CLAMPING PIN                 |
| 5            | 123      | 1     | 1       | 212164-0             |                   | NADELKRANZ             |                                | NEEDLE CAGE                  |
| 5            | 124      | 1     | 1       | 131120100            |                   | KURBELWELLE KPL.       |                                | CRANKSHAFT COMPLETE          |
| 5            | 125      | 1     | 1       | 211154-0             |                   | KUGELLAGER (EINKLEBEN) | 6202                           | BALL BEARING (USE GLUE)      |
| 5            | 126      | 1     | 1       | 131111111            |                   | KURBELGEHÄUSE KPL. KS  | INC. 125                       | CRANKCASE CL. SIDE ASSY.     |
| 5            | 127      | 2     | 2       | 936430160            |                   | SPIRALSPANNSTIFT       | 3x16                           | CLAMPING PIN                 |
| 5            | 128      | 3     | 3       | 908705165            |                   | SCHRAUBE               | M5X16                          | H.L. SOCKET HEAD BOLT        |
| 5            | 129      | 1     | 1       | 962900160            |                   | RADIALDICHTUNG         | 30x20x5                        | OIL SEAL                     |
| 5            | 130      | 1     | 1       | 326658-0             |                   | DISTANZHÜLSE           | 15mm                           | SLEEVE                       |
| 5            | 131      | 1     | 1       | 908006205            |                   | INNENSTERN-SCHRAUBE    | M6x20                          | SCREW                        |
| 5            | 132      | 1     | 1       | 143754-7             |                   | DÄMPFUNGSPFEDER KPL.   |                                | DAMPING SPRING ASSEMBLY      |
| 5            | 133      | 3     | 3       | 130118070            |                   | STAHLKLAMMER           |                                | STEELCLIP                    |
| 5            | 140      | 4     | 4       | 914105656            |                   | SCHRAUBE               | M5X65                          | H.L. SOCKET HEAD BOLT        |
| 5            | 142      | 1     | 1       | 131111080            |                   | HITZESCHUTZFOLIE       |                                | HEAT PROTECTION FOIL         |
| 5            | 143      | 2     | 2       | 327008-2             |                   | DISTANZHÜLSE           | 5                              | SLEEVE                       |
| 5            | 144      | 1     | 1       | 908605505            |                   | INNENSTERN-SCHRAUBE    | M5x50                          | SCREW                        |
| 5            | 145      | 2     | 2       | 905708215            |                   | SCHIENENBOLZEN         |                                | STUD BOLT                    |
| 5            | 156      | 1     | 1       | 181132080            |                   | KOLBENRING             | Ø 45                           | PISTON RING                  |
| 5            | 157      | 2     | 2       | 234390-1             |                   | SPRENGRING             | 11                             | CIRCLIP                      |
| 5            | 166      | 1     |         | 131110150            |                   | MOTORTRÄGER-SET ROT    | INC. 142,145                   | ENGINE HOUSING ASSEMBLY RED  |
| 5            | 166      | 1     |         | 131110650            |                   | MOTORTRÄGER-SET BLAU   | INC. 142,145                   | ENGINE HOUSING ASSEMBLY BLUE |
| 5            | 166<br>a | 1     |         | 131110100            |                   | MOTORTRÄGER ROT        |                                | ENGINE HOUSING RED           |
| 5            | 166<br>a |       | 1       | 131110600            |                   | MOTORTRÄGER BLAU       |                                | ENGINE HOUSING BLUE          |

3/8"



.325"



PS550, EA5600F

7

Werkzeuge, Zubehör  
Tools, accessories

| Seite / Page | Pos. | PS550 | EA5600F   | Teil-Nr.<br>Part No. | Hinweise<br>Notes | Bezeichnung           | Spezifikation<br>Specification | Description           |
|--------------|------|-------|-----------|----------------------|-------------------|-----------------------|--------------------------------|-----------------------|
| 7            | A01  | 1     |           | 415038631            |                   | STERNSCIENE           | .325" .058"<br>38CM-15"        | SPROCKET NOSE BAR     |
| 7            | A01  | 1     |           | 415045631            |                   | STERNSCIENE           | .325" .058"<br>45CM-18"        | SPROCKET NOSE BAR     |
| 7            | A02  | 1     |           | 415325710            |                   | UMLENKSTERN KPL.      | .325" .058"                    | SPROCKET NOSE         |
| 7            | A05  | 1     |           | 528086764            |                   | SÄGEKETTE             | .325" .058"<br>38CM-15"        | SAW CHAIN             |
| 7            | A05  | 1     |           | 528086772            |                   | SÄGEKETTE             | .325" .058"<br>45CM-18"        | SAW CHAIN             |
| 7            | A06  | 1     |           | 558083000            |                   | AUßENLASCHE           | .325" .058"                    | TIE STRAP             |
| 7            | A07  | 1     |           | 558083010            |                   | AUßENLASCHE MIT NIET  | .325" .058"                    | TIE STRAP WITH RIVETS |
| 7            | A10  | 1     |           | 415038651            |                   | STERNSCIENE           | 3/8" .058"<br>38CM-15"         | SPROCKET NOSE BAR     |
| 7            | A10  | 1     |           | 415045651            |                   | STERNSCIENE           | 3/8" .058"<br>45CM-18"         | SPROCKET NOSE BAR     |
| 7            | A10  | 1     | 445045651 |                      |                   | STERNSCIENE           | 3/8" .058"<br>45CM-18"         | SPROCKET NOSE BAR     |
| 7            | A11  | 1     | 1         | 415038720            |                   | UMLENKSTERN KPL.      | 3/8" .058"                     | SPROCKET NOSE         |
| 7            | A14  | 1     |           | 523093756            |                   | SÄGEKETTE             | 3/8" .058"<br>38CM-15"         | SAW CHAIN             |
| 7            | A14  | 1     |           | 523093764            |                   | SÄGEKETTE             | 3/8" .058"<br>45CM-18"         | SAW CHAIN             |
| 7            | A14  | 1     | 523093664 |                      |                   | SÄGEKETTE             | 3/8" .058"<br>45CM-18"         | SAW CHAIN             |
| 7            | A15  | 1     | 528099664 |                      |                   | SÄGEKETTE             | 3/8" .058"<br>45CM-18"         | SAW CHAIN             |
| 7            | A16  | 1     | 1         | 558093000            |                   | AUßENLASCHE           | 3/8" .058"                     | TIE STRAP             |
| 7            | A17  | 1     | 1         | 558093010            |                   | AUßENLASCHE MIT NIET  | 3/8" .058"                     | TIE STRAP WITH RIVETS |
| 7            | A20  | 1     |           | 952010140            |                   | KETTENSCHUTZ          | 43 cm                          | CHAIN PROTECTION      |
| 7            | A20  | 1     |           | 952020150            |                   | KETTENSCHUTZ          | 50 cm                          | CHAIN PROTECTION      |
| 7            | A20  | 1     |           | 952010640            |                   | KETTENSCHUTZ          | 43 cm                          | CHAIN PROTECTION      |
| 7            | A20  | 1     |           | 952020650            |                   | KETTENSCHUTZ          | 50 cm                          | CHAIN PROTECTION      |
| 7            | A21  | 1     | 1         | 957004004            |                   | WERKZEUG-SET          |                                | TOOL KIT              |
| 7            | A22  | 1     | 1         | 941719141            |                   | KOMBISCHLÜSSEL        | SW 13/19                       | UNIVERSAL WRENCH      |
| 7            | A23  | 1     | 1         | 940827000            |                   | WINKELSCHRAUBENDREHER | T27                            | ANGLED SCREW DRIVER   |
| 7            | A24  | 1     | 1         | 783012-5             |                   | SCHRAUBENDREHER       |                                | SCREWDRIVER           |
| 7            | A25  | 1     | 1         | 950004002            |                   | WERKZEUGTASCHE        |                                | PLASTIK BAG           |

PS550, EA5600F



- 1** Kraftstofftank, Bügelgriff  
Fuel tank, tubular grip
- 2** Handschutz, Kettenbremse  
Hand guard, chain brake
- 3** Zünder, Luftfilter  
Ignition coil, air filter
- 4** Polrad, Anwerfvorrichtung  
Flywheel, starter
- 5** Zylinder, Kurbelwelle, Schalldämpfer  
Cylinder, crankshaft, muffler
- 7** Werkzeuge, Zubehör  
Tools, accessories

|  | Zeichenerklärung   | Key to symbols  |
|--|--|---|
| <b>=&gt; 1999999</b><br><b>2000000 =&gt;</b><br><b>2003.04 =&gt;</b><br><b>TI 2003/07</b><br><b>Acc.</b><br><b>=</b><br><b>{</b><br><b>m</b><br><b>Corr.</b> | Produktion bis Serien-Nr.<br>Neues Teil ab Serien-Nr.<br>Neues Teil ab Jahr / Monat<br>Siehe Technische Information Jahr / Nr.<br>Zubehör (nicht im Lieferumfang)<br>Keine Serienausführung, jedoch verwendbar<br>Beinhaltet Positions-Nr.<br>Meterware<br>Druckfehlerberichtigung | Production to serial number<br>New part from serial number<br>New part from Year / Month<br>See Technical Infromation Year / No.<br>Accessories (not included in the delivery inventory)<br>No standard execution, may be used<br>Contains item number<br>Sold by the meter<br>Error correction |
|  | Änderungen vorbehalten   | Specifications subject to change without notice   |